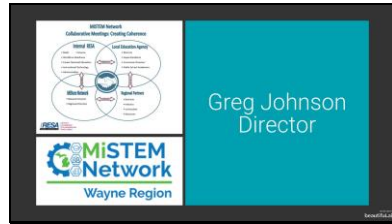
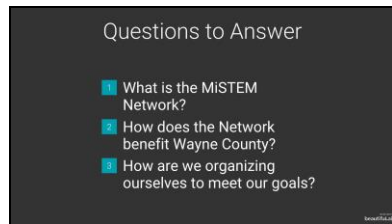


Slide 1



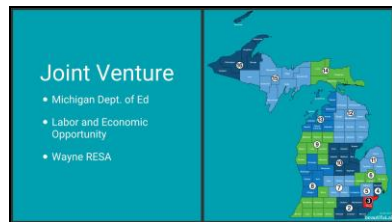
\_The MiSTEM Network is the name for our state-wide network and it is short for Michigan Science Technology, Engineering, and Mathematics Network.

Slide 2



\_I would like to answer the following questions. \_Also I would like to invite Mari Treece to comment at any point in the presentation as she is invaluable to the network and has provided great leadership and support.

Slide 3



The State-wide MiSTEM Network is a collaborative effort, or a joint venture, between 2 government agencies and ISDs/RESA's and Universities. Our goal is to **\_\_Ensure that every student can thrive in our STEM economy**

\_The structure of this Network was guided by the recommendations from the Governor's MiSTEM Advisory Council, first created by Governor Snyder, and still supported by Governor Whitmer

---

Slide 4

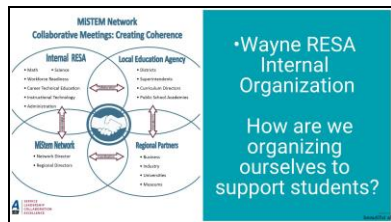


\_\_\_To get the work done financial resources, in the form of grants, have been made available. There is political will to continue to provide this funding recognizing that the economic health of our state is tied to human talent. Our role is to develop that human talent in the area of STEM.

---

---

Slide 5



We have organized ourselves in a collaborative matrix. \_\_\_ We are collaborating with a wide range of individuals and organizations across our county with the goal of supporting student growth. \_\_\_ This larger group gives us guidance on our strategic plan and is intricately involved in our programs

---

---

---



This summer students will be utilizing engineering hands-on activities, reading informational texts, and writing.

---

Slide 9



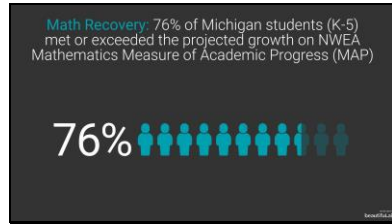
\_Pillar 2, is about empowering STEM teachers by providing professional development and support. The MiSTEM Network financially supports this work by providing our consultants with training and purchasing materials for our teachers in Wayne County. For example, two of our consultants have gone through Math Recovery Training and are training teachers in Wayne County.

The Everyday Mathematics work is the development of a curriculum framework that can support math instruction across the county.

Lastly, a mathematics leadership network was created that is building momentum for math improvement across the county.

---

Slide 10



\_ Math Recovery has had a great impact in Michigan and we look forward to expanding this math support in Wayne County

---

---

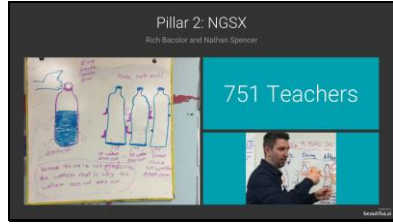
Slide 11



\_ Also in Pillar 2, is our Biology Pilot Project. Although Michigan adopted new science standards a number of years ago, only recently have curricular materials been developed that are aligned. This project, led by Nathan Spencer, is comparing two of these curricular resources to make a recommendation to our county leadership. The training and the lab equipment is provided through our MiSTEM funding. Nathan's training in California was paid by our regional MiSTEM Network funds.

---

Slide 12

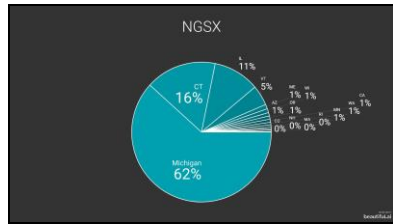


Another one of our initiatives is NGSX. The Next Generation Science Exemplar is preparing K-12 teachers across our county to teach the Michigan Science Standards. As you can see, 751 Wayne County Teachers have gone through this 5-day training so far.

---

---

Slide 13



This is more than any other state in our nation.

---

---

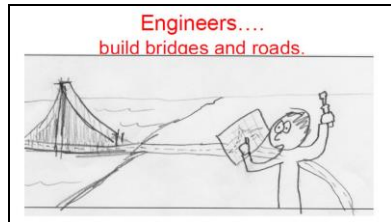
Slide 14



Engineering is now part of our K-12 science standards. In the area of engineering, we have trained 86 elementary and MS teachers across the county. Because of MiSTEM funding we have been able to purchase kits so that many of these teachers have everything they need to implement engineering in their classrooms. MiSTEM sent our RESA Science Consultant, Lisa, to Boston to receive the “Engineering is Elementary” training.

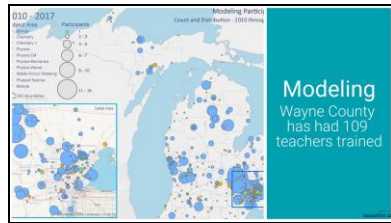
---

Slide 15



\_\_We are working hard to get non-traditional groups, such as women, to see engineering as a possible career option for them. \_\_\_\_\_

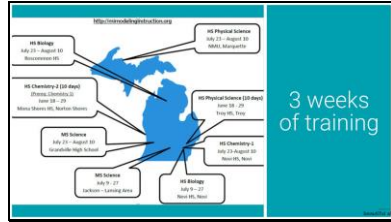
Slide 16



\_Modeling is another teacher professional learning opportunity and also has a curriculum for those teachers who have completed the 3 week training. You can see that we have more teachers in SE Michigan than anywhere else in the state.

\_\_\_\_\_

Slide 17

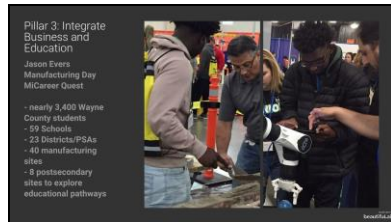


---

---

---

Slide 18



\_Pillar 3's focus is integrating business and education. Jason Evers, one of our CTE consultants, has led the charge in this area.

---

Slide 19



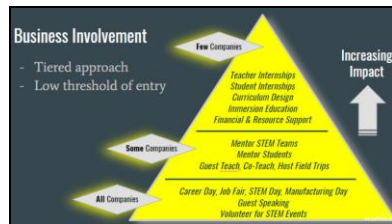
\_Another example of Pillar III is the GIS Talent Consortium that our MiSTEM Network is a part of. GIS is used across business sectors including autonomous vehicles, agriculture, and government. This Talent Consortium received just under \$1 Million through the Marshall Plan for Talent Grant. We have created 3 dual enrollment courses with EMU and are currently offering them at the Henry Ford Academy, Van Buren School District, as well as other schools. Students will have paid internships with the support of our business partners and



SEMCA/Michigan Works. At the end of the coursework students can take the test for the ESRI software certification and FAA Drone certification as well as receive college credit.

---

Slide 20



This slide is from the US Department of Labor. Our goal is to get more of our companies involved in student internships and teacher externships

---

---

Slide 21



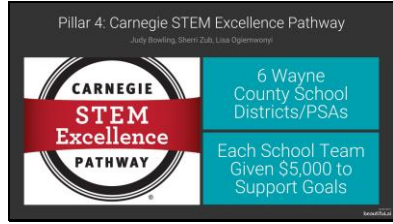
Pillar 4 is insuring high quality STEM experiences for students.

---

One avenue to this goal is our STEM Maker Summit at the Henry Ford Museum. At this summit, teachers from across the county learn about new technology, and different ways to get their students engaged in the creative process of design and fabrication.

---

Slide 22

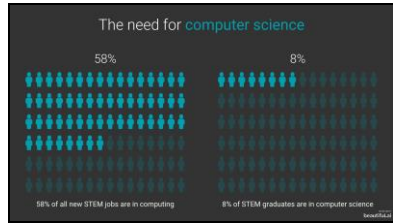


\_Our Carnegie STEM Pathway is another example of Pillar 4. 6 Wayne County schools were selected to receive 3 days of continuous improvement training in the area of STEM education. Each of the public schools will also receive \$5,000 to support their improvement efforts.

---

---

Slide 23

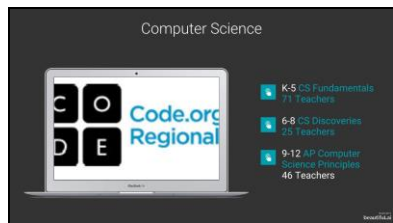


\_One of the great areas of need, identified by regional and state data, is the promotion of computer science as a career path.

---

---

Slide 24



\_Our MiSTEM Network has partnered with Code.org to support the teaching of computer science K-12.

---